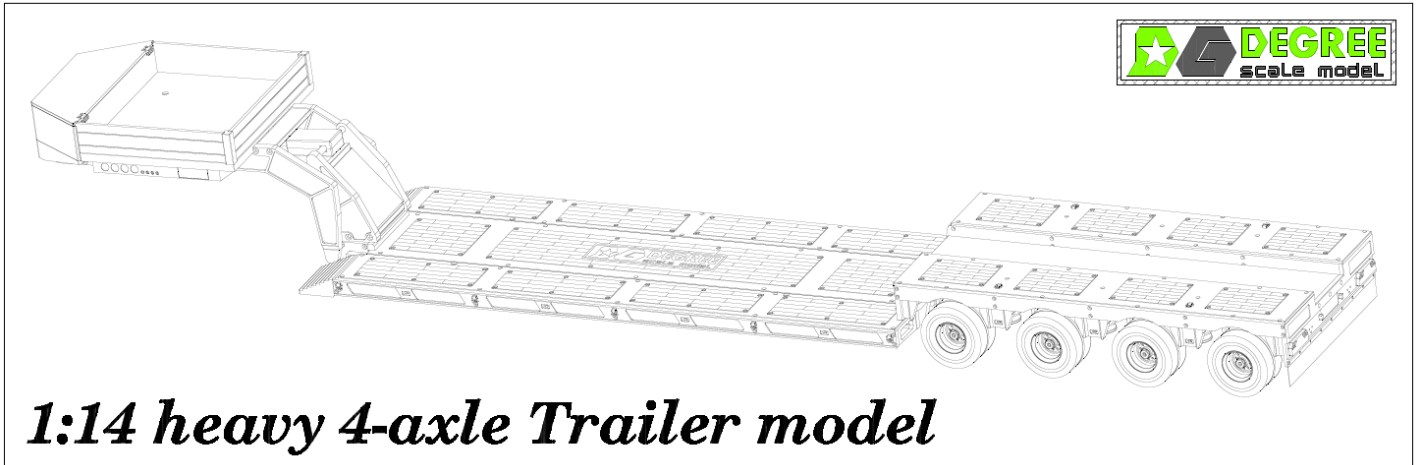


DEGREE MODEL 帝格模型



可拆卸 4 轴转向拖车安装使用说明书.

Instructions for installation and operation of detachable 4-axle steering Trailer

非常感谢您的购买，在产品组装和使用之前，请仔细阅读说明书。

Thank you very much for your purchase. Please read the manual carefully before assembling and using the product.

岳阳市帝格模型工作室

Yueyang DEGREE model studio

2021.09.10 MADE IN CHINA

使用说明 instructions:

本车全长 1280mm，水平高度 170mm，水平情况离地间隙 13mm，中间宽度调节 197~235mm。整车重量 7kg，限载重量 40kg。建议使用 2s (7.4v) 3000MAh 25c 锂电池。

注：1 建议螺杆电机电调不要全油门升降，由于自己开发电调，对散热和电流大小有所保留，全油门开启升降，容易导致信号丢失，电调重启。

2 在行车过程中，一定要注意前部顶升舵机要收放回位，防止舵机机构顶住卡车后部大梁，导致伺服舵机烧毁。

3 在行车过程中，中部有运输荷载的情况下，严禁调节宽度，否则导致宽度调节失败，调宽伺服电机烧毁。

The whole length of the car is 1280mm, the horizontal height is 170mm, the horizontal clearance from the ground is 13mm, and the middle width is adjusted by 197–235mm. The weight of the whole vehicle is 7kg, and the load limit weight is 40kg. It is recommended to use 2 s (7.4v) 3000 MAH 25C lithium battery.

Note: 1. It is suggested that the electric adjustment of screw motor should not raise and lower the full throttle. Due to the electric adjustment developed by ourselves, the heat dissipation and current should be reserved. When the full throttle is turned on, it is easy to lose the signal and restart the electric adjustment.

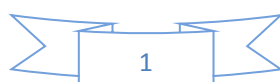
2. In the process of driving, it is necessary to pay attention to the retraction and placement of the front jack up steering gear to prevent the steering gear mechanism from standing against the rear girder of the truck, resulting in the burning of the servo steering gear.

3. In the process of driving, when there is a transportation load in the middle, it is strictly prohibited to adjust the width. Otherwise, the width adjustment fails and the width adjustment servo motor burns down

安装说明 Installation instructions:

本产品分为 3 段包装发货，在使用前，需要对产品安装调试。转向系统已经初步调试正常。

This product is divided into three parts packaging and delivery. Before use, the product needs to be installed and debugged. The steering system has been debugged normally.



1 前部 front

侧面有电压显示和总电源开关。底部注意设置好舵机行程位置，防止堵转烧毁。

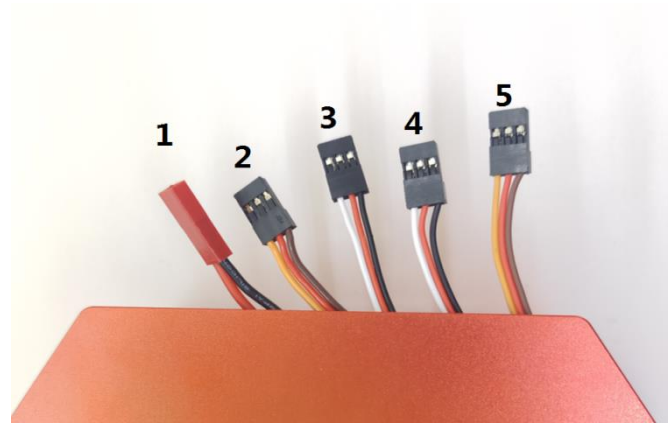
There are voltage display and main power switch on the side. Pay attention to setting the travel position of the steering gear at the bottom to prevent locked rotor from burning.

AA 电池盒接线说明 Battery box wiring instructions:

1. jst 电源插头，采用 2s 锂电池。

1. JST power plug, using 2S lithium battery.

2.粗橙红灰 3p 线，控制舵机顶升作用。采用旋钮通道控制，注意设置舵机的行程量，防止堵转，导致舵机烧毁。



2.The thick orange red grey 3P line controls the lift of rudder. Adopt the knob channel control, pay attention to setting the stroke of the steering gear to prevent the steering gear from burning due to locked rotation.

3.4.S2/S3 一根控制中部舵机调节中间板宽度。一根扩展旋转工程灯通道。

3.4. S2/S3 one controls the middle steering gear to adjust the width of the middle plate. Another extended rotary engineering light channel.

5. 细橙红灰 3p 线，拆卸部位马达电调控制线，采用旋钮通道。建议旋钮通道油门比例调节到 80%。减速电机伸出没有行程开关，注意伸出距离，防止丝杆脱离。减速电机收回有限位开关限制堵转。

5. Fine orange red gray 3P line, motor electric regulation control line at the disassembly position, and knob channel is adopted. It is recommended to adjust the throttle ratio of knob channel to 80%. There is no travel switch for the extension of the reduction motor. Pay attention to the extension distance to prevent the screw rod from separating. The speed reduction motor retracts the limit switch to limit locked rotor.

BB 前端接触板 Front contact plate:

+. 5v 电压负极 5V negative pole

-. 5v 电压正极 5V positive

Y. 备用接触点 Spare contact point.

S1. 转向信号 Tire turn signal

S2/S3. 中部舵机伸缩信号线和扩展旋转信号线

Extension signal line and rotary light signal line of intermediate steering gear

CC 前端转向控制，降压模块，电调模块 Front end steering control, step-down module, electric regulating module:

A 7p2.0 插头输出。7p2.0 plug output.

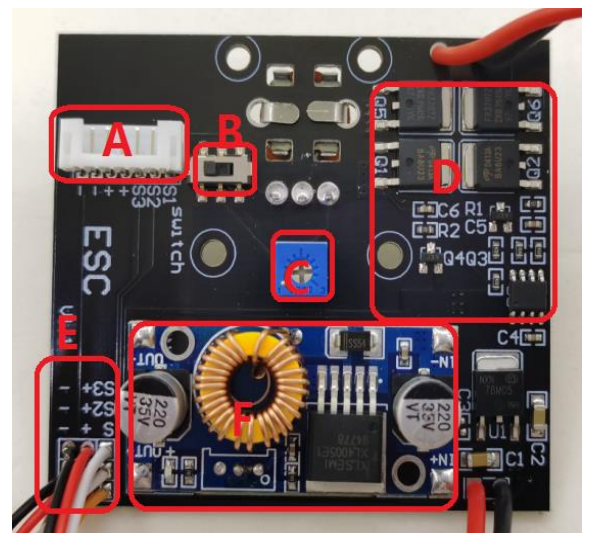
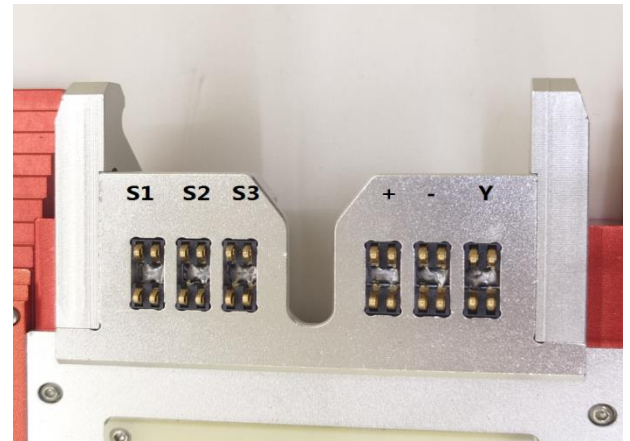
B 后轮转向方向正反调节。Positive and negative adjustment of rear wheel steering direction

C 转向电位器中位调节。Steering potentiometer center adjustment.

D 电调模块，上部为马达输出线。Electric regulating module, upper part is motor output line

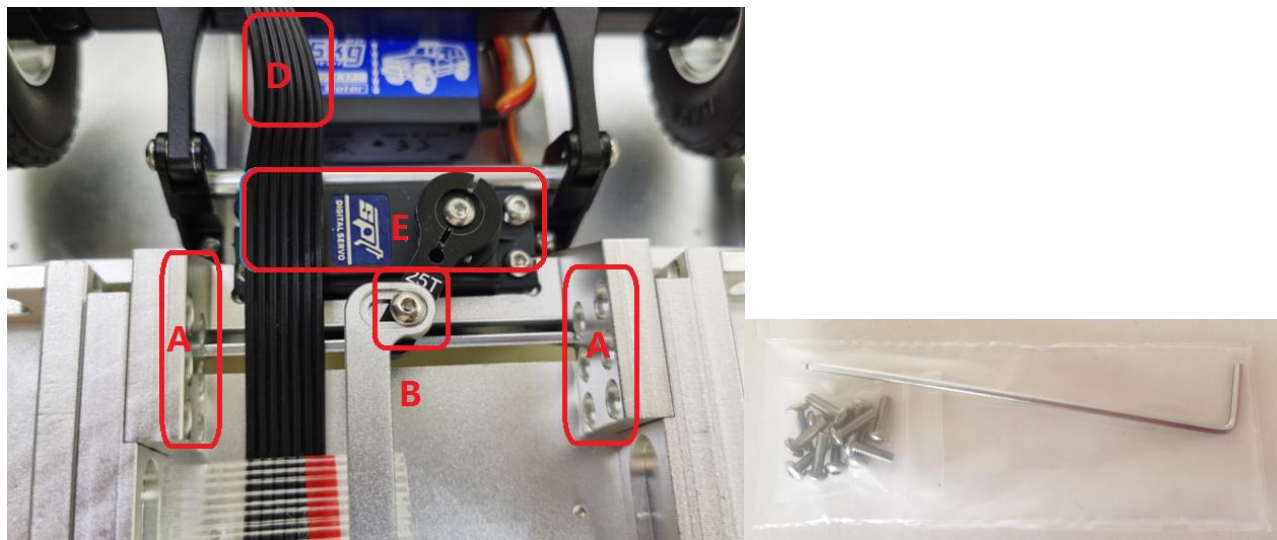
E 3 组信号线，S2 和 S3 为上图信号 6 和 8，S1 为电调马达信号。Three groups of signal lines, S2 and S3 are the above signals 6 and 8, S1 is the electric regulating motor signal.

F 降压模块输出 5v 10a 电流为舵机供电。The step-down module outputs 5V 10A current to supply power for the steering gear.



2 中部 central section

AA 中部和尾部连接 Middle and tail connection;



A 12 颗 m3*10 螺丝固定安装。Fix and install 12 m3 * 10 screws.

B 拆下螺丝后安装，注意原螺丝孔位。Remove the screws and install them. Pay attention to the original screw hole position.

D 7P 导线插入后部电路板。7p lead is inserted into the rear circuit board

E 接通电源，注意调节舵机行程量，采用遥控器的旋钮通道控制，防止舵机堵转憋死烧坏。

Turn on the power supply, pay attention to adjusting the stroke of the steering gear, and use the knob channel control of the remote control to prevent the steering gear from blocking and burning.

3 尾部 tail

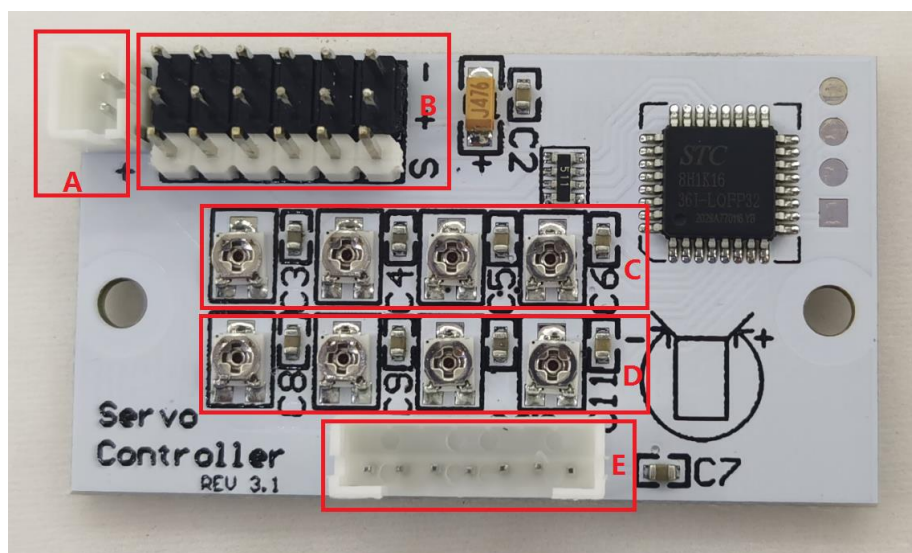
AA 舵机转向板说明 Steering gear steering plate description :

A 5.0v 电源插座，给尾灯接收机供电 5.0V power socket to power tail light receiver

B 3P 舵机插座。从左到右 S3,S2,第一桥转向，第二桥转向，第三桥转向，第四桥转向。

3P steering gear socket. From left to right S3, S2, the first axle turns, the second axle turns, the third axle turns, the fourth axle turns.

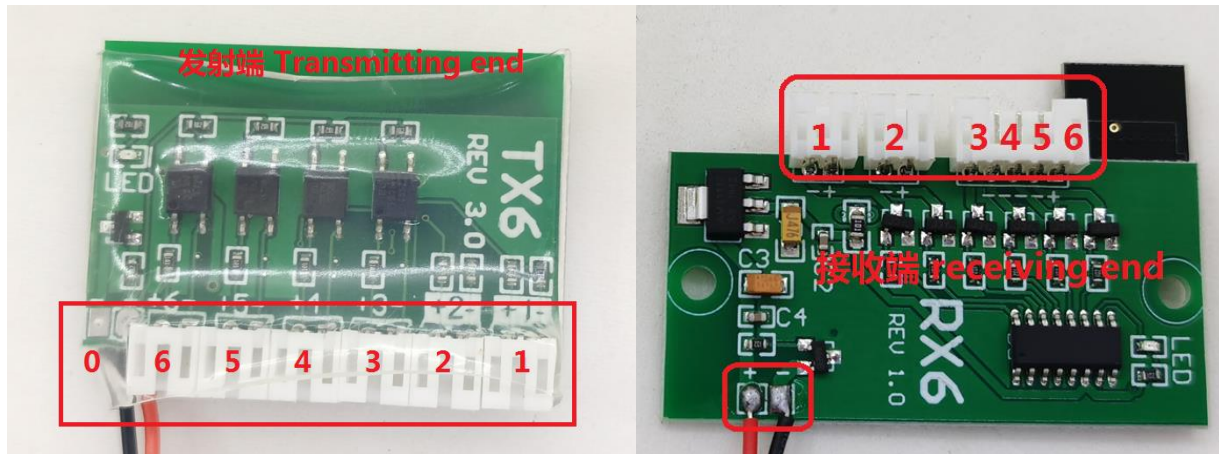
C/D 车桥转向弧度调节，从左到右为 1~4 桥转向弧度，注意调节，防止弧度过大，导致舵机堵



转烧毁。车桥转向中位调节。Adjustment of axle turning radian, from left to right is 1-4 axle turning radian. Pay attention to the adjustment to prevent the steering camber from being too large, resulting in the locked rotation of the steering gear burning. Axle steering center adjustment.

E 接中部 7p 插座。Connect the 7p socket in the middle.

BB 尾灯发射接收板说明 Tail lamp transmitting and receiving board description



0 电源 5v Power supply 5V

1-6 刹车灯，示廓灯，车牌灯，倒车灯，左转向灯，右转向灯. Brake lamp, clearance lamp, license plate lamp, reversing lamp, left turn signal lamp, right turn signal lamp

说明 explain:

灯光传输为蓝牙传输，注意信号干扰，如果发射端和接收端红灯在闪烁，说明信号丢失没有匹配上。发射端的每个插座有正负极之分，正负极接入拖头车灯组对应的灯光导线上。

The light transmission is Bluetooth transmission. Pay attention to the signal interference. If the red lights of the transmitter and the receiver are flashing, it means that the signal is lost without matching. Each socket at the transmitting end is divided into positive and negative poles, which are connected to the light wire corresponding to the headlamp group.

结束，如有疑问，请咨询卖家，谢谢。

End, if you have any questions, please consult the seller, thank you.

Mailbox: 76824054@qq.com

TEL +086 15973005515

facebook ID 吴国政